



12 Malvern Road

Seaton Sluice, Whitley Bay NE26 4BZ

- Well extended to the rear
- Sought after location
- 17Ft Dining Room
 - 15ft Kitchen
- Three Bedrooms
- Semi-detached home
 - 14Ft Lounge
 - 9Ft Breakfast room
- Utility area/ground floor WC
- Modern Shower room

£279,950





Situated in the ever so sought after area of Seaton Sluice within walking distance to the sea front and local amenities. Being sold with the benefit of no upper chain.

Briefly comprising Entrance Hallway, Living room to the front with bay window and feature fireplace, good sized Dining Room, Breakfast room with patio doors to the rear, 14Ft Kitchen, Utility area, ground floor WC. To the first floor there are 3 Bedrooms, 2 of which have built in wardrobes, shower room with walk in shower enclosure with electric shower, vanity wash hand basin and low level WC.



Externally to the front is a driveway leading to a garage which has light and power and electric door. Garden area. To the rear is a fenced garden with gravel and paved patio, garden shed.



Entrance Porch

Reception Hallway

Lounge

14'4 x 11'8

Dining Room

17'11 x 9'4

Breakfast Room

9'4 x 7'9

Kitchen

15'11 x 8'0

Utility Room

Ground floor cloaks/WC

First floor landing

Bedroom 1

11'11 x 10'8

Bedroom 2

11'3 x 10'1

Bedroom 3

6'11 x 6'8

Shower Room

7'0 x 6'11

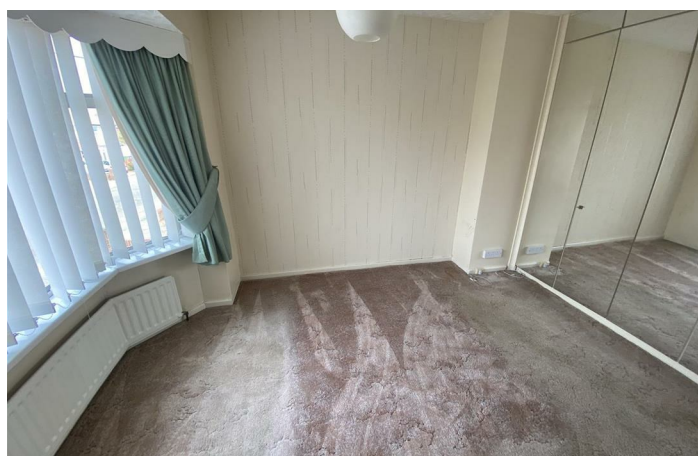
Externally

Disclaimer

ML Estates Ltd endeavour to maintain accurate descriptions of properties in Virtual Tours, Brochures, Floor Plans and descriptions, however, these are intended only as a guide and purchasers must satisfy themselves by personal inspection. All rooms have been measured with electronic laser and are approximate measurements only. None of the services to the above property have been tested by ourselves, and we cannot guarantee that the installations described in the details are in perfect working order.

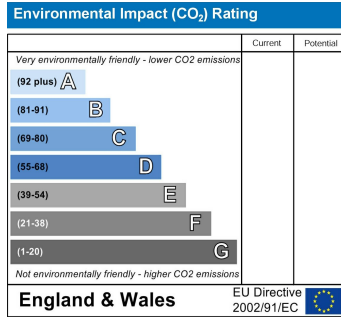
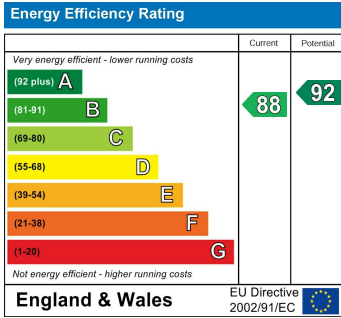
ML Estates for themselves, the vendors or lessors, produce these brochures in good faith and are a guideline only. They do not constitute any part of a contract and are correct to the best of our knowledge at the time of going to press. Pictures may appear distorted due to enlargement and are not to be used to give an accurate reflection of size. All negotiations and payments are subject to contract.

The Tenure of the property should be clarified by your legal representative prior to exchange of contracts.





Local Authority Northumberland County Council
Council Tax Band C
EPC Rating B
Tenure Freehold



ML Estates Sales Office

27 Avenue Road, Seaton Delaval, Tyne
 And Wear, NE25 0DT

Contact

0191 237 60 60
 sd@mlestates.co.uk
 www.mlestates.co.uk/

Agents Note: Whilst every care has been taken to prepare these particulars, they are for guidance purposes only. All measurements are approximate and for general guidance purposes only and whilst every care has been taken to ensure accuracy, they should not be relied upon and potential buyers/tenants are advised to recheck the measurements.